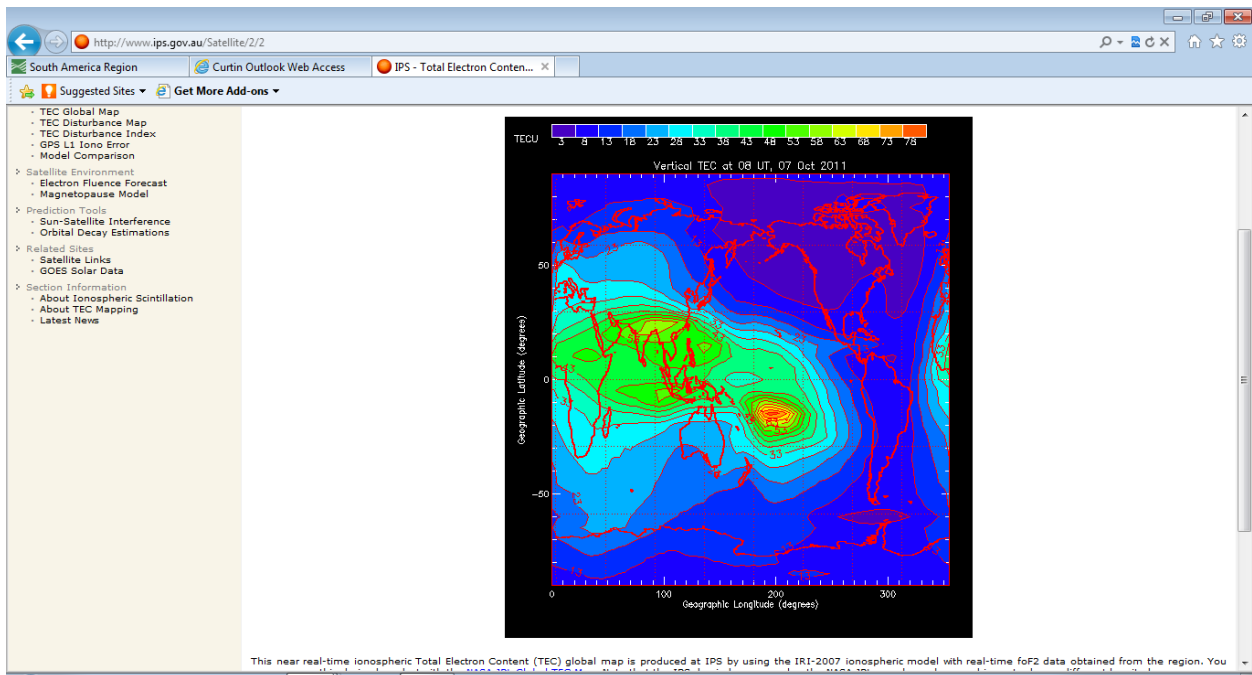


0700ut 07th October, 2011



0800ut 07th October, 2011

== PRELIMINARY EARTHQUAKE REPORT ==

Region: TONGA

Geographic coordinates: 20.522S, 173.223W

Magnitude: 6.0 Mw

Depth: 19 km

Universal Time (UTC): 8 Oct 2011 08:53:14

Time near the Epicenter: 8 Oct 2011 21:53:14

Local standard time in your area: 8 Oct 2011 16:53:14

Location with respect to nearby cities:

220 km (137 miles) ENE (72 degrees) of NUKU'ALOFA, Tonga

223 km (138 miles) SSE (159 degrees) of Neiafu, Tonga

383 km (238 miles) WSW (244 degrees) of Niue Island

2507 km (1558 miles) W (259 degrees) of PAPEETE, Tahiti, French Polynesia

ADDITIONAL EARTHQUAKE PARAMETERS

event ID : US c00066hi