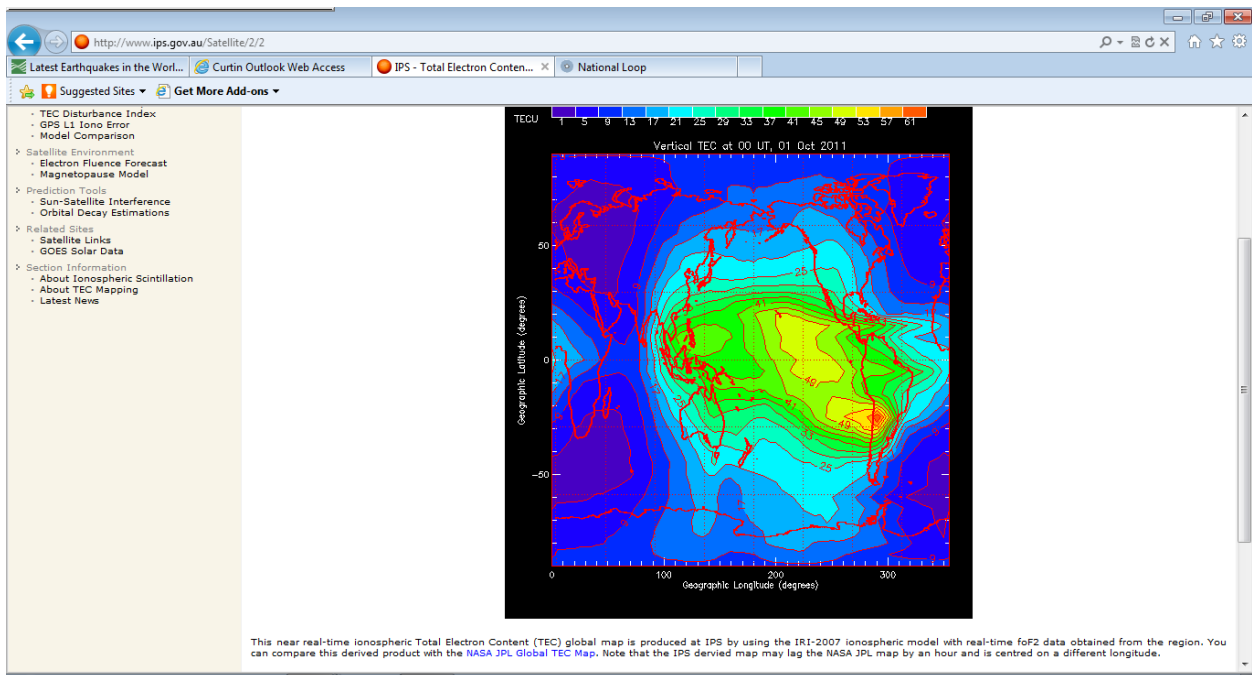
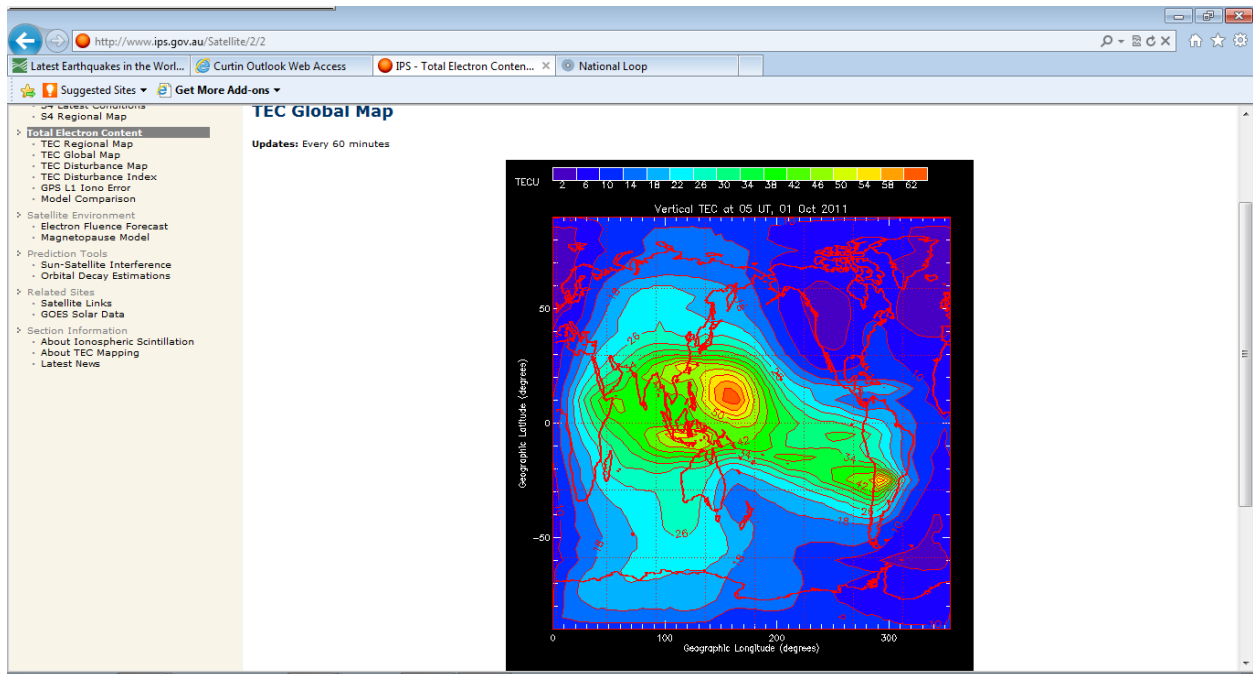


Yesterday above

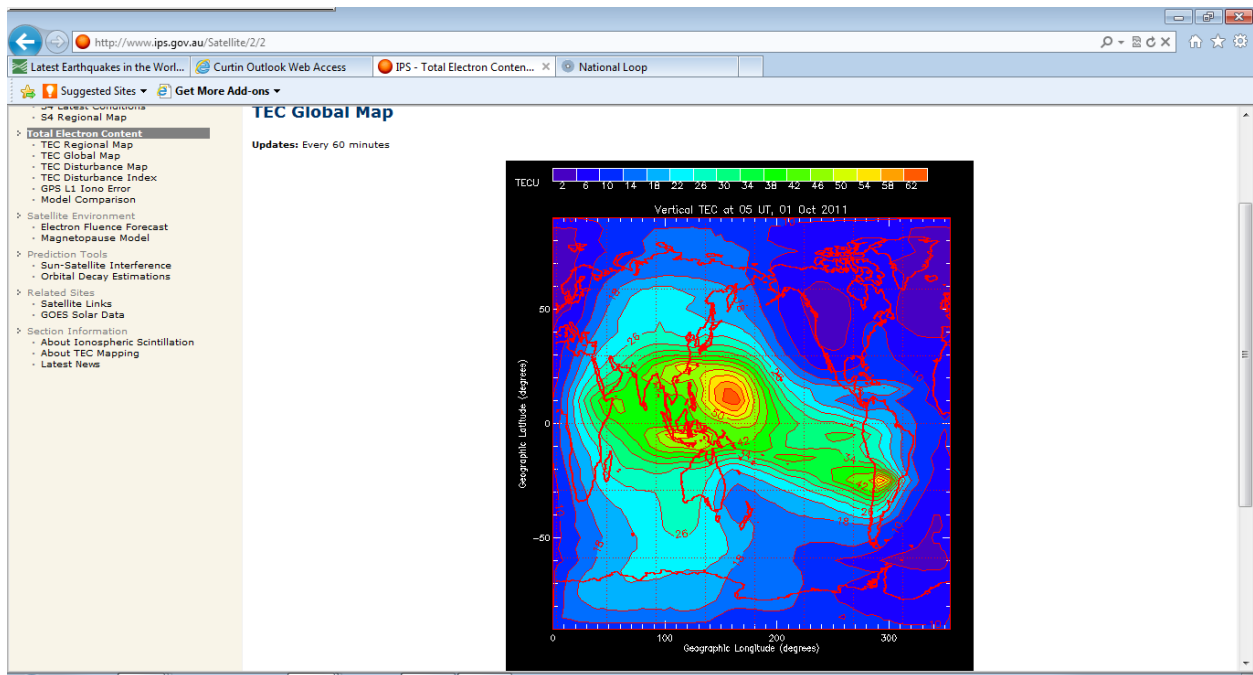
Today 1st October 2011 morning



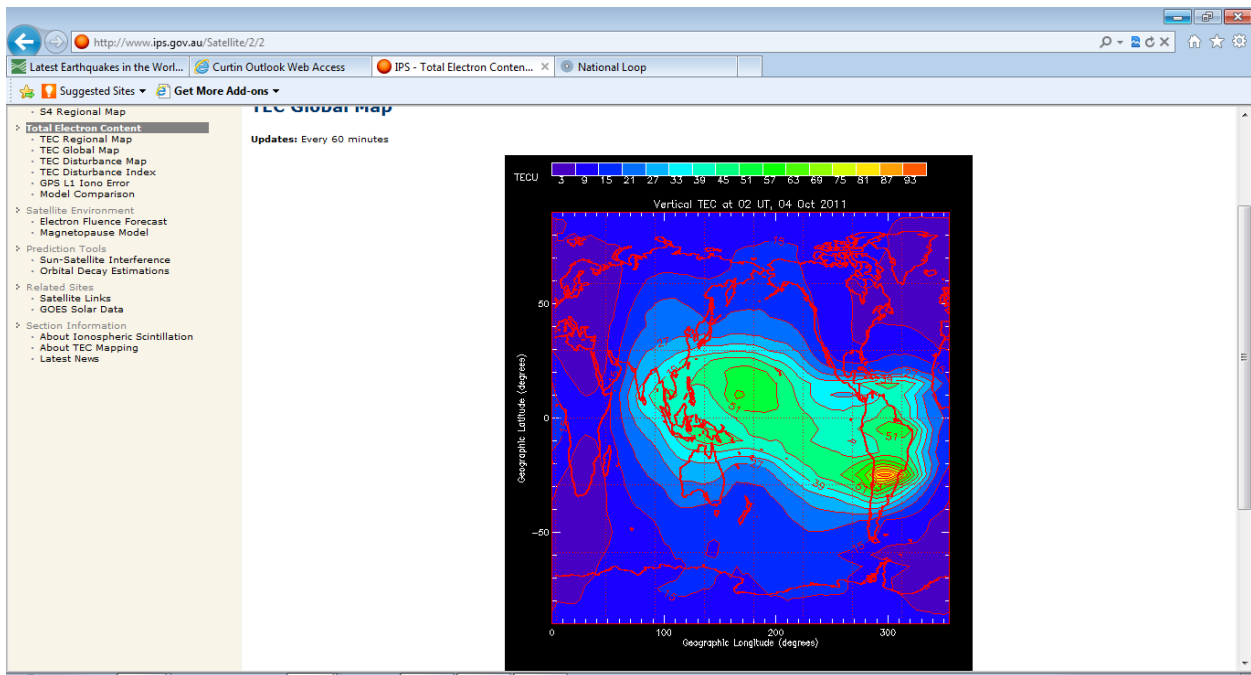
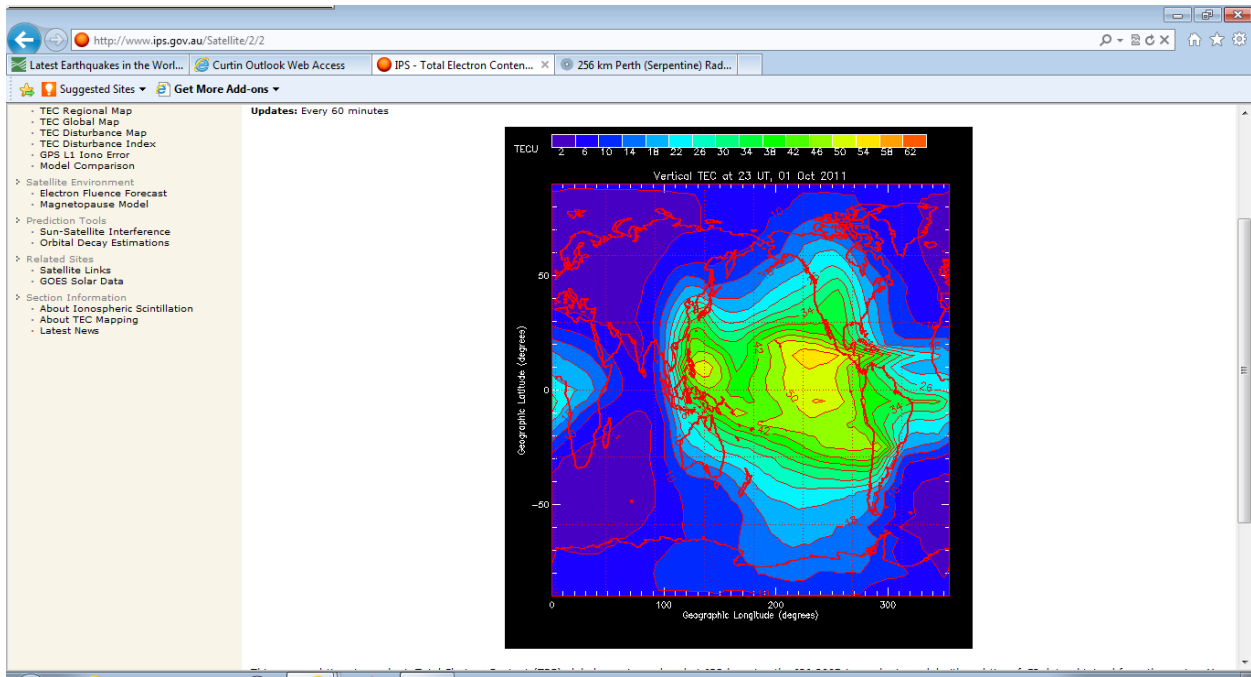


TEC 1st Oct 2011 1426WST or 0626UTC (+8Hrs) event over south America

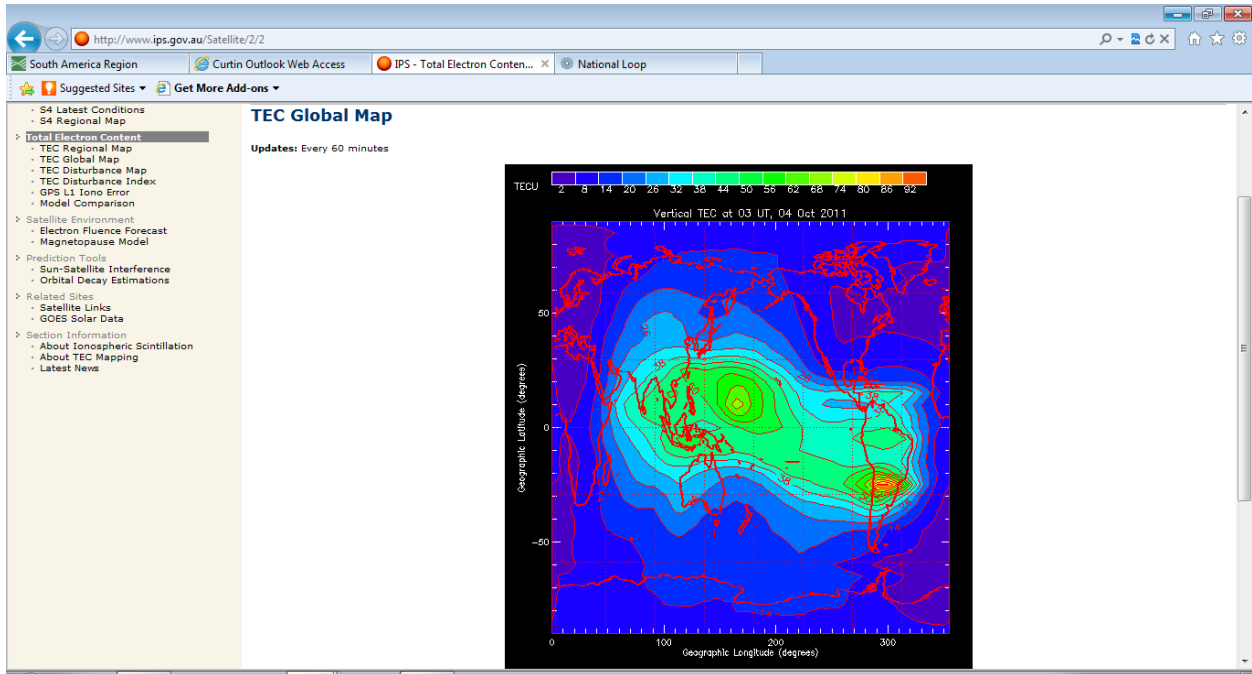
Below at 0640UT or 1440WST 1st October 2011



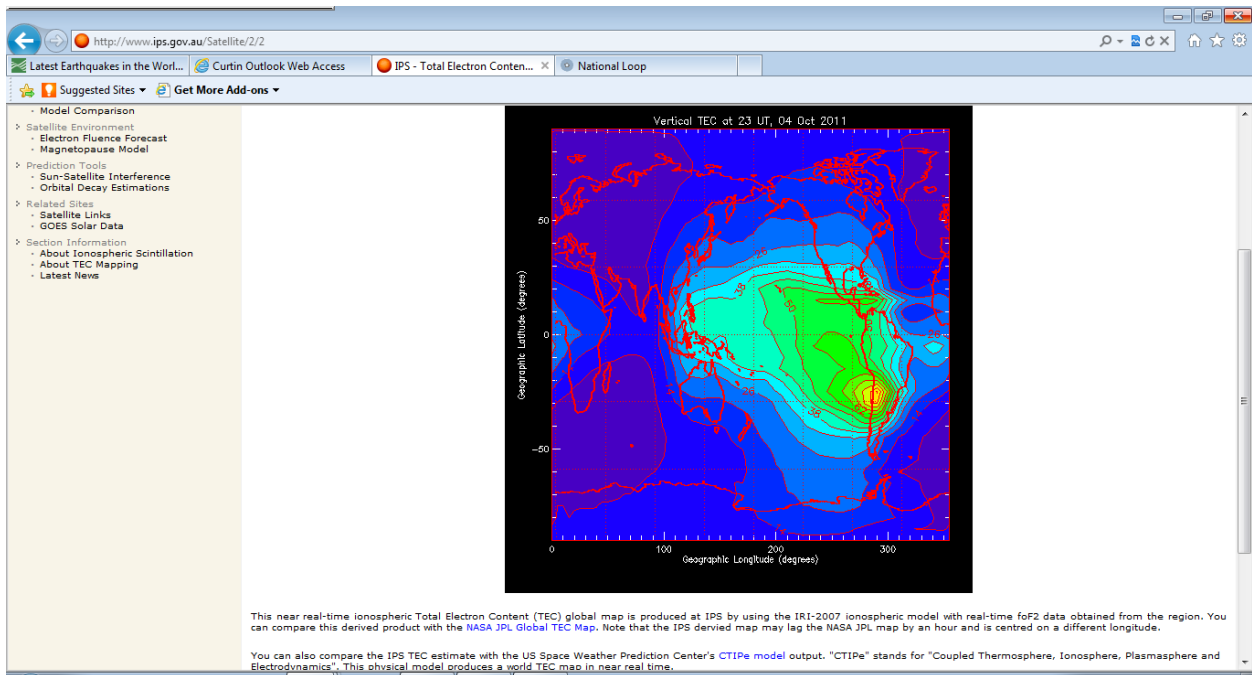
TEC 2300UT 1st October 2011



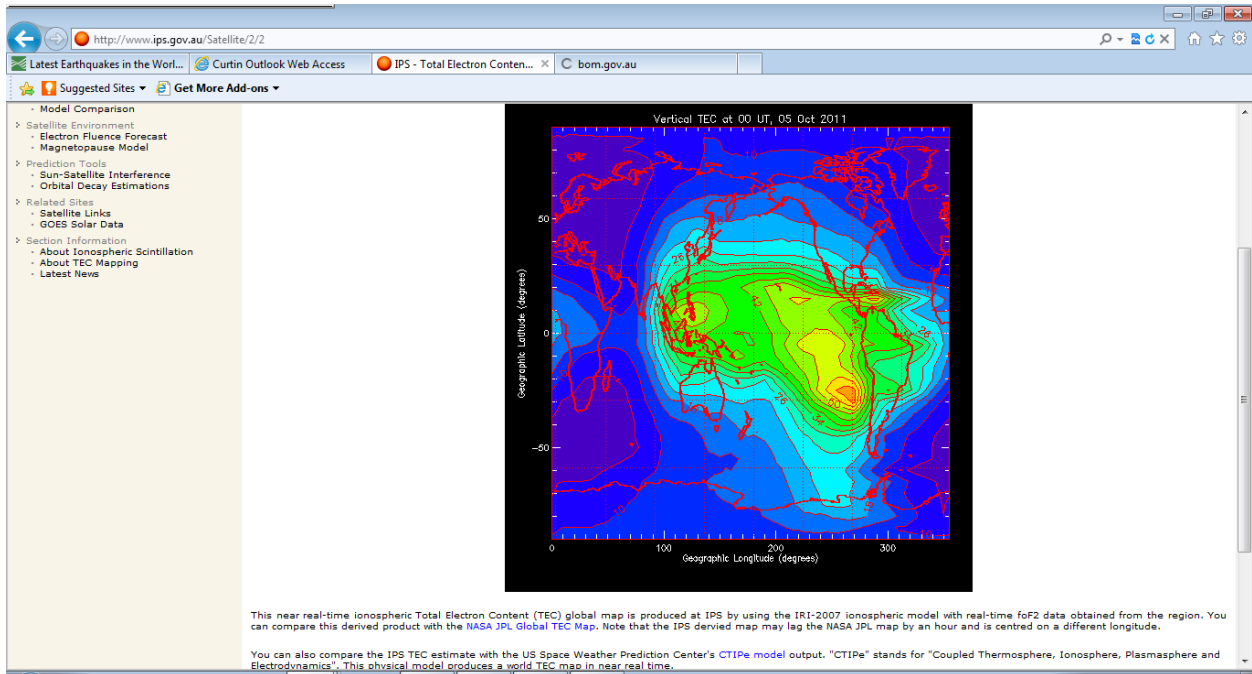
Today 04th October, 2011 0306UT



0428ut 4th Oct 2011

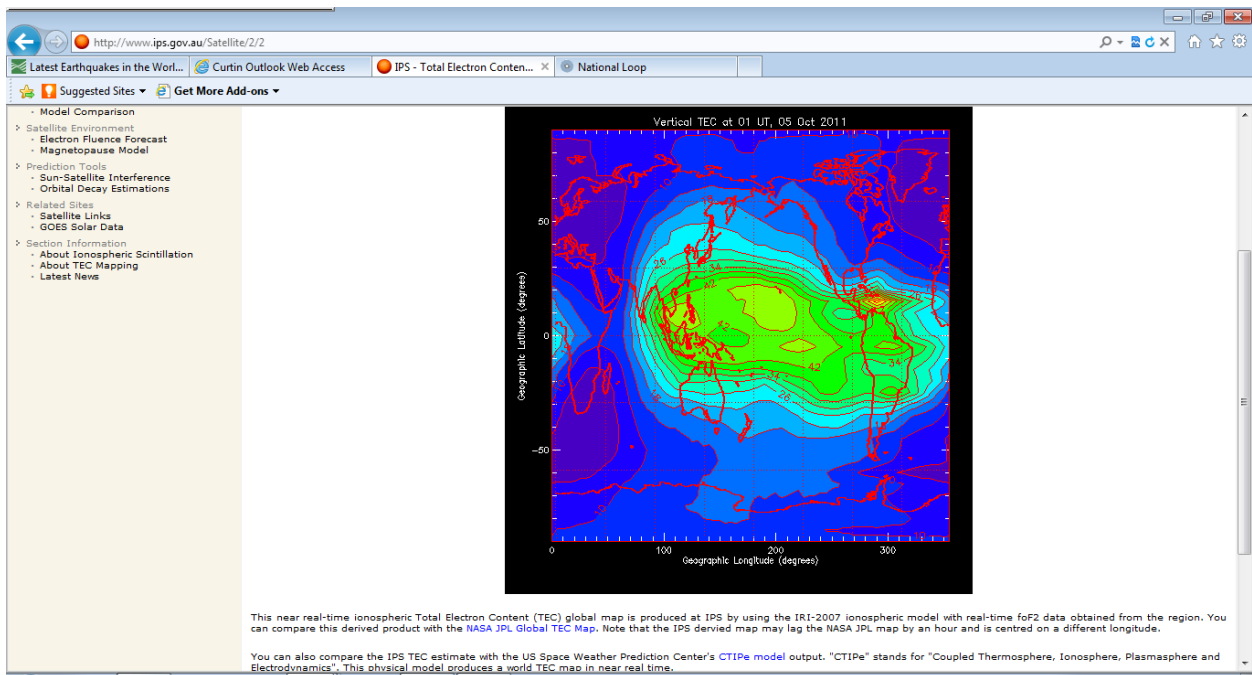


0000UT 5th Oct 2011

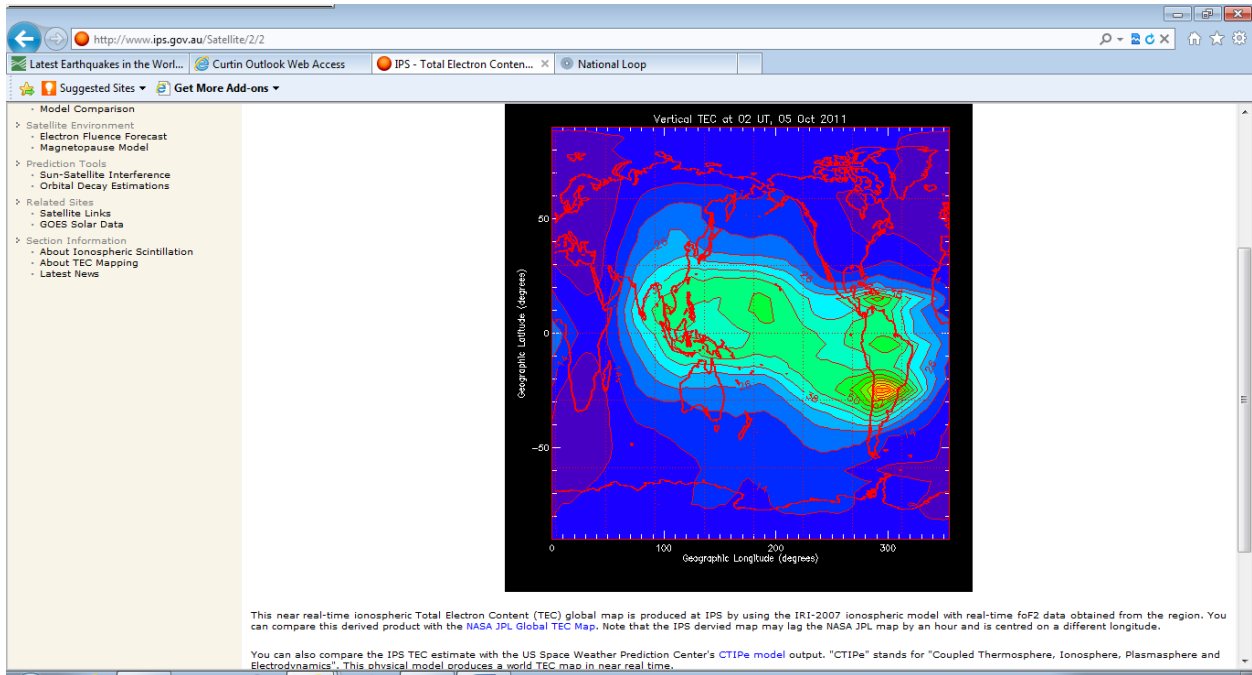


i.e 0900wst 0100UT note Haiti

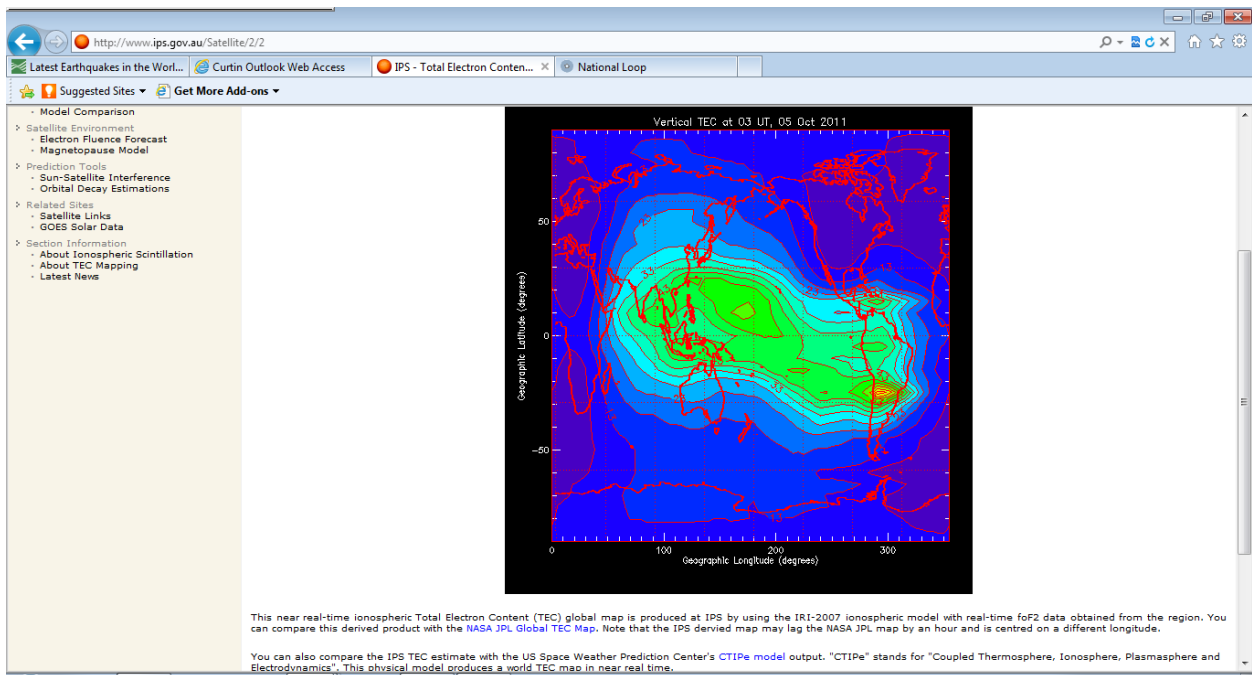
i.e. 1000wst 0200Ut note Haiti

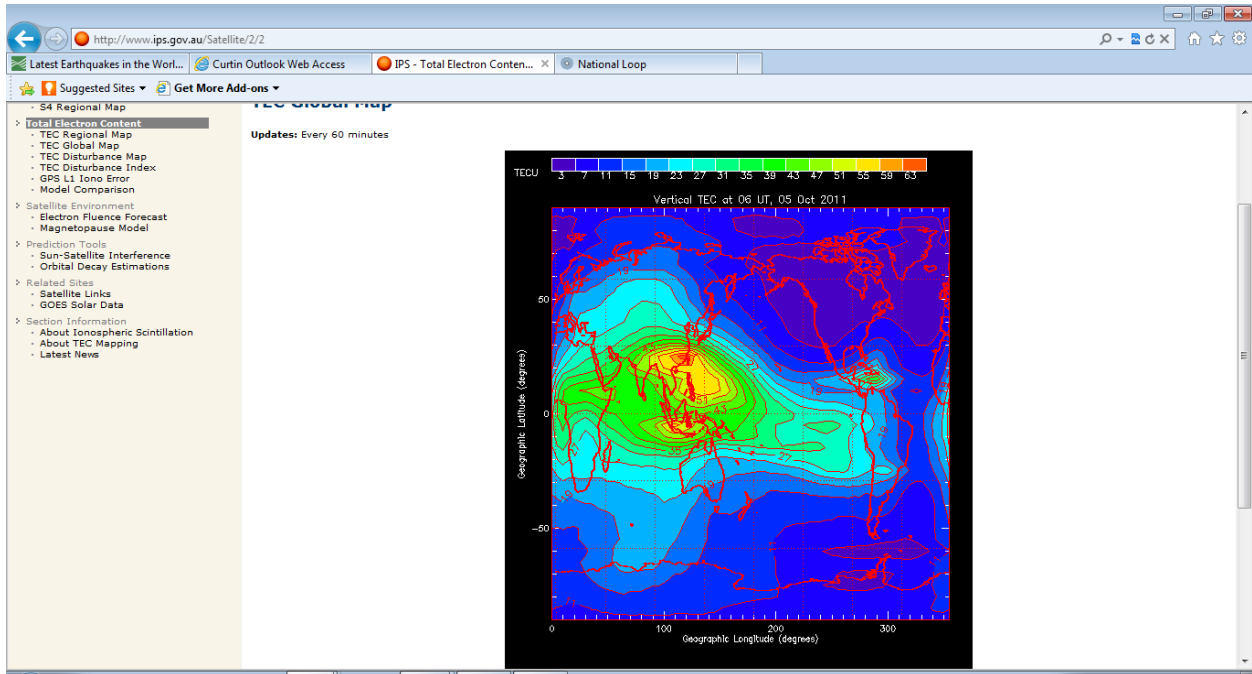


At 1100WST or 0300UT 5th Oct 2011 we see South America again!

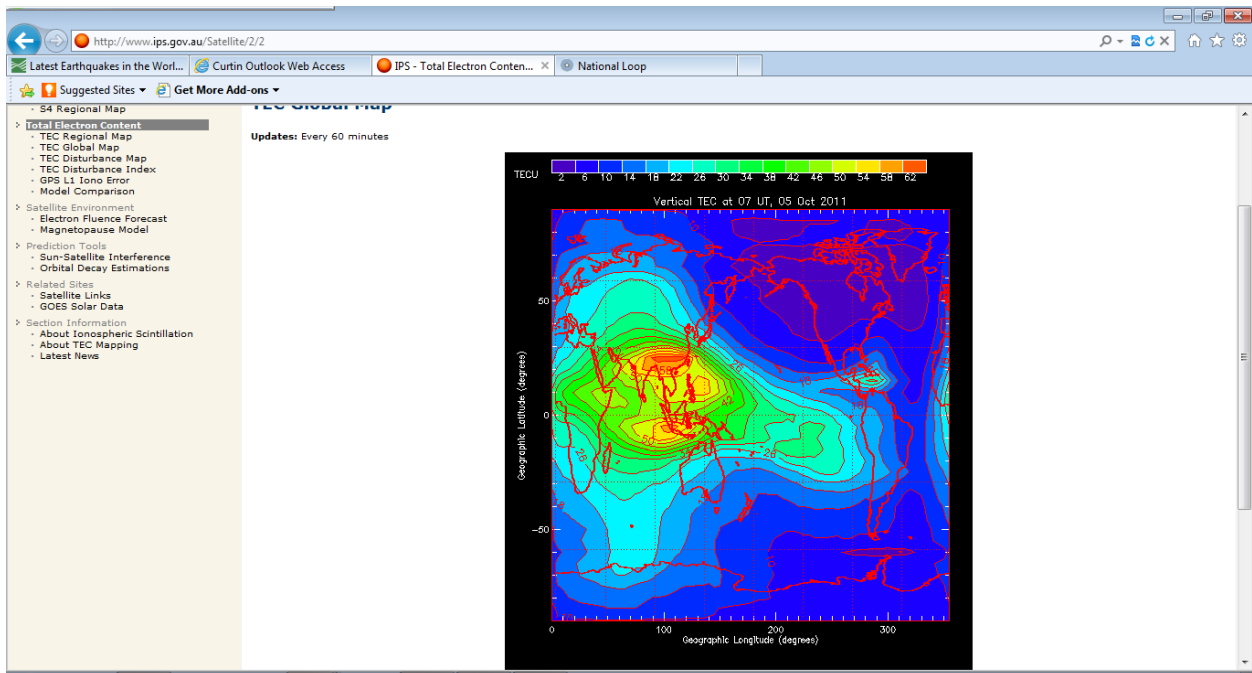


@1200wst or 0400UT 5th Oct 2011

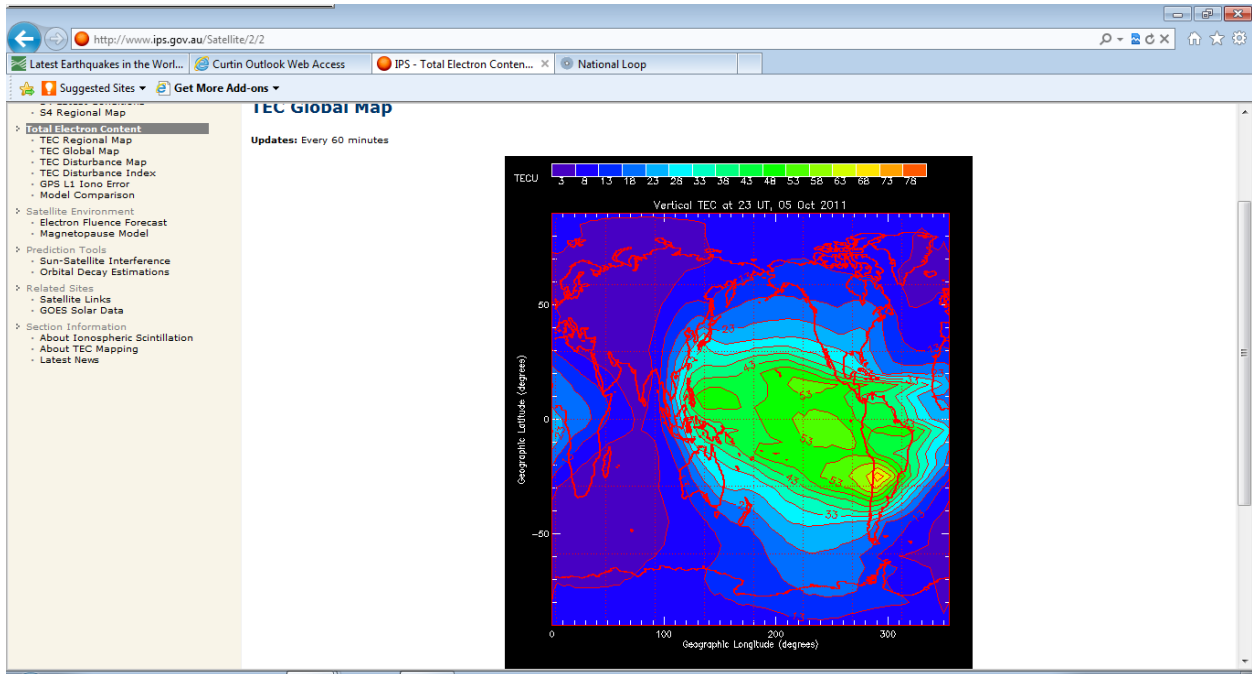




1500wst =0700UT 5th October 2011 note Haiti area and residual over South America



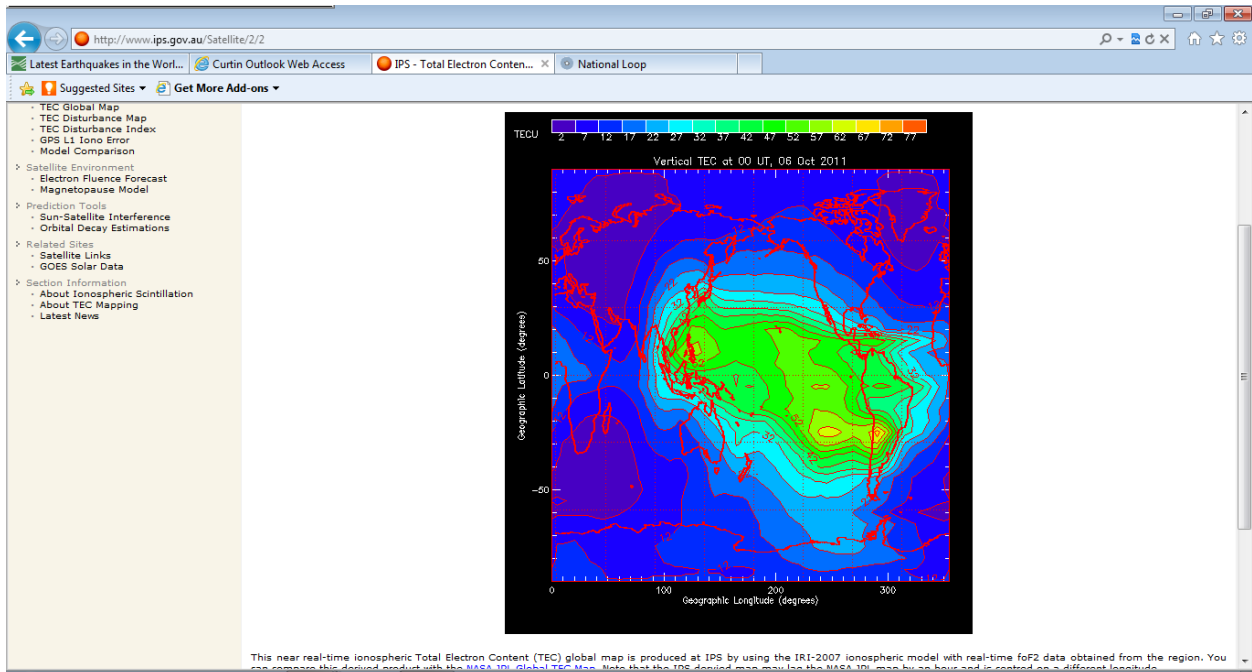
1600wst 0800UT 5th October 2011

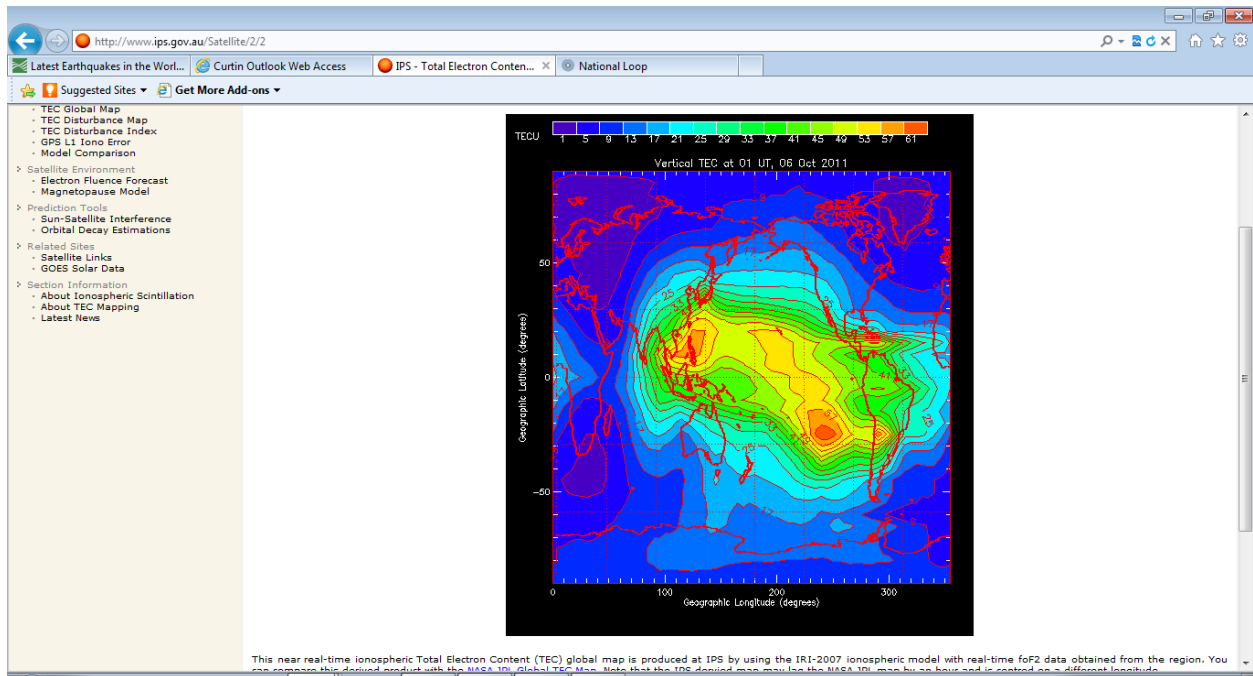


2300UT 5th October 2011

0000Ut 6th October 2011

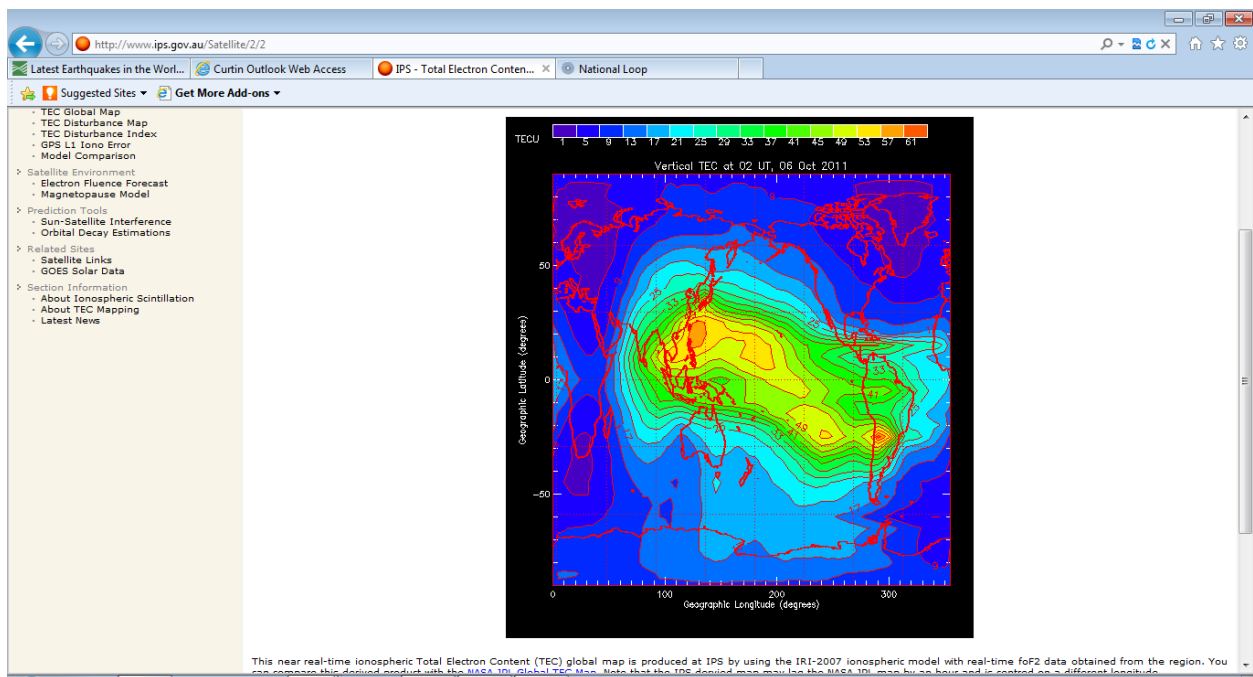
=0800wst 6th October, 2011



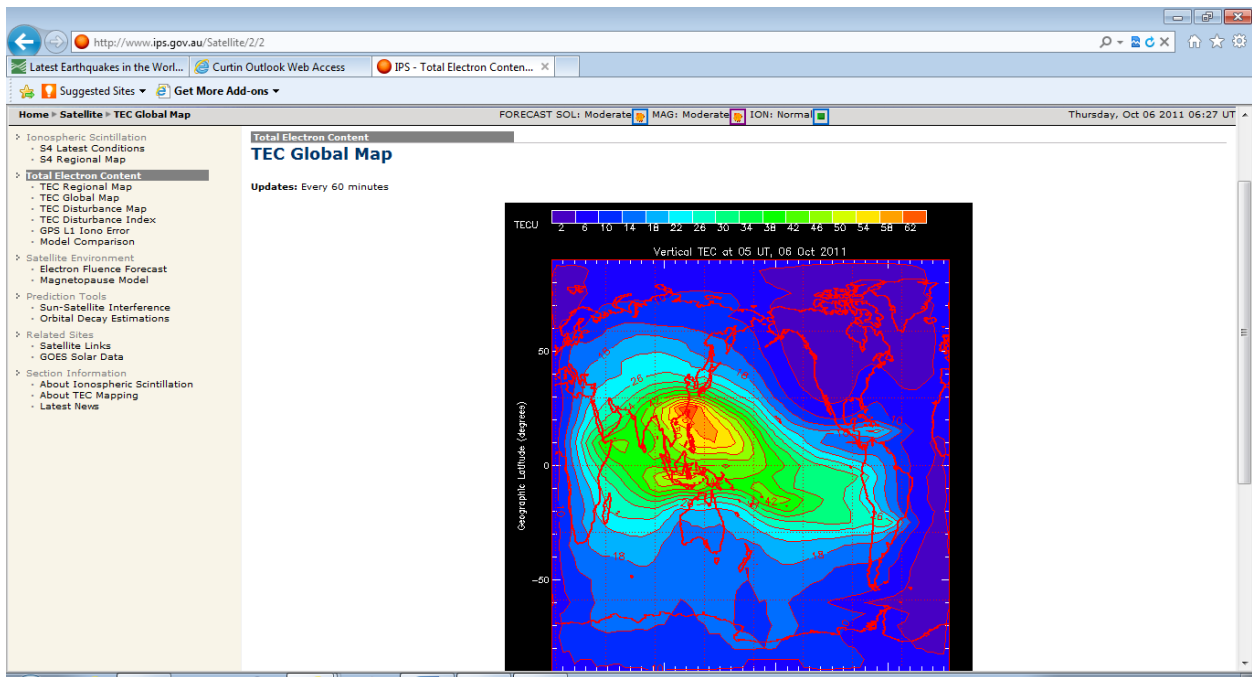
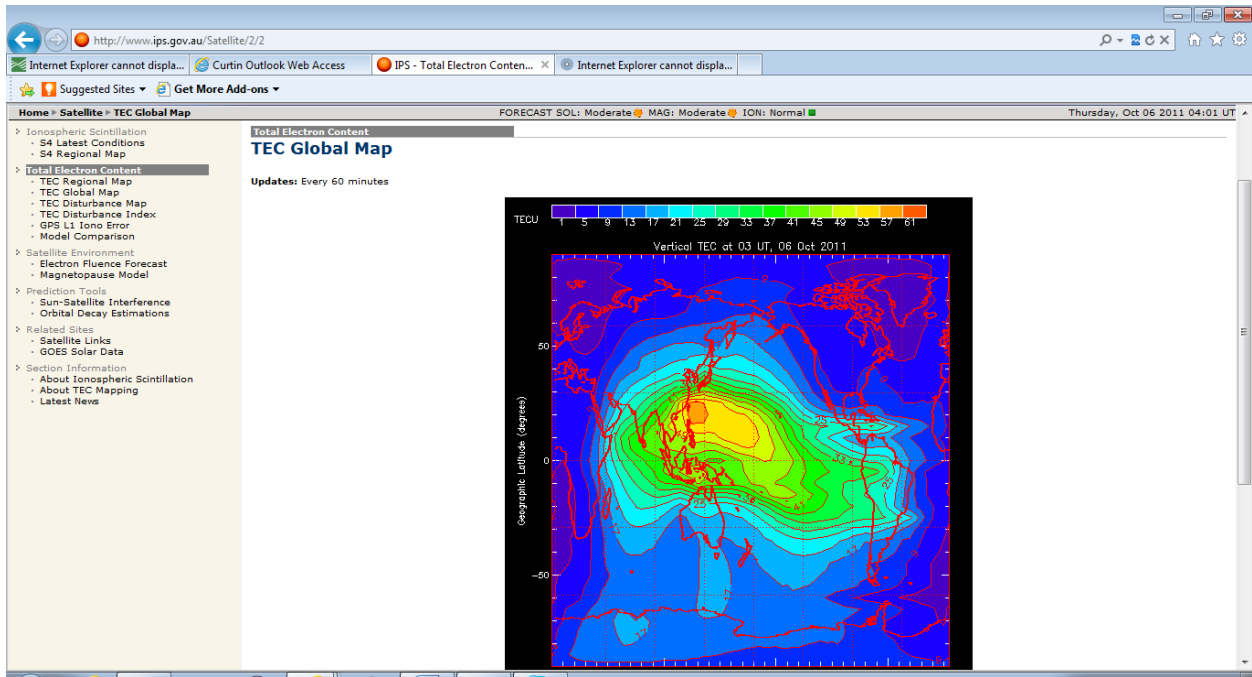


0100UT 6th October 2011 (0900 wst 6th October, 2011)

0200UT

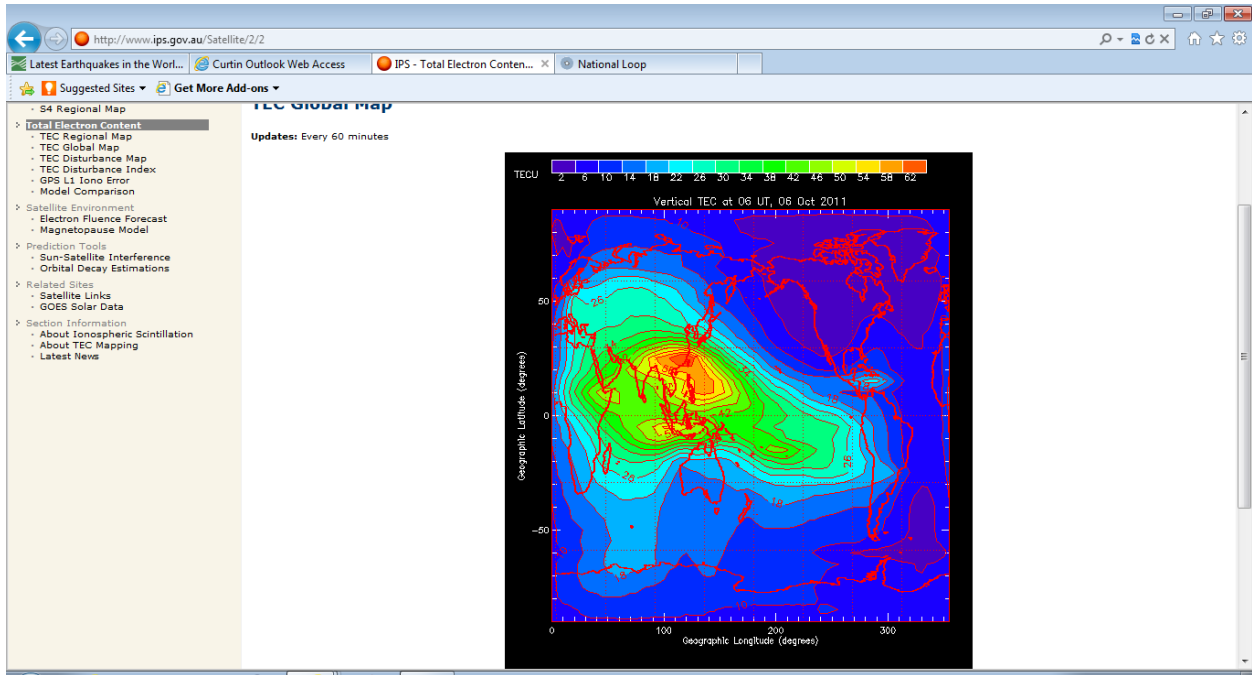


0300ut 6th Oct 2011

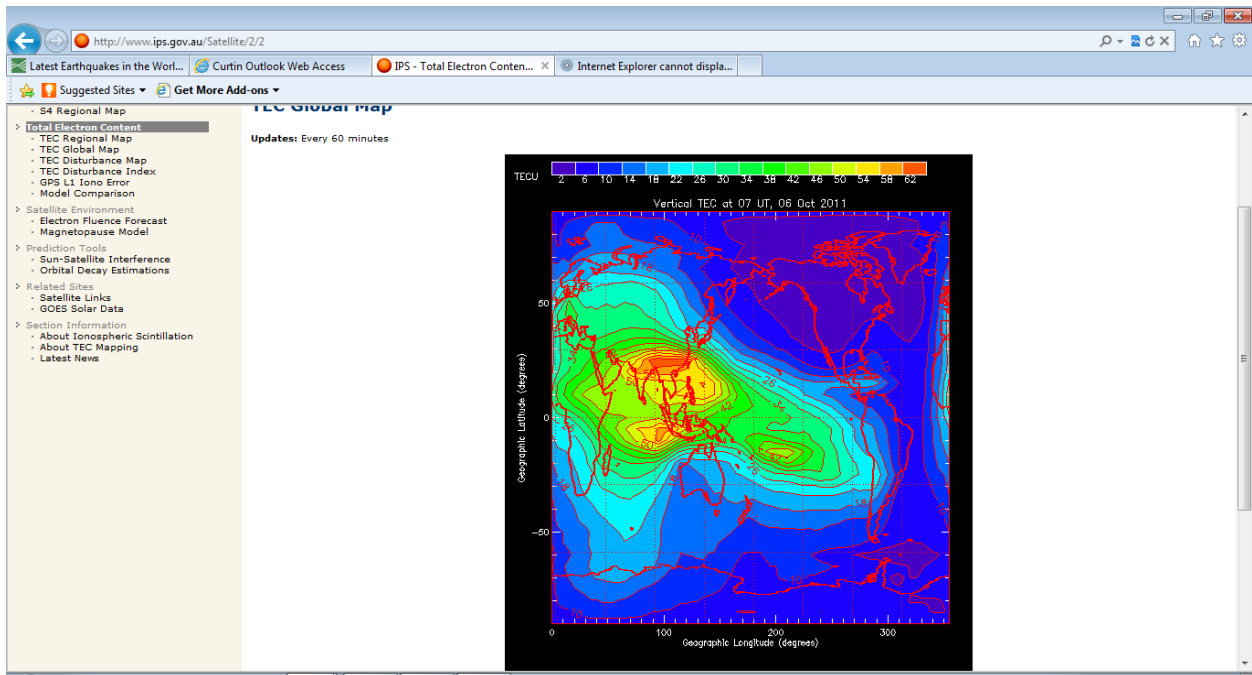


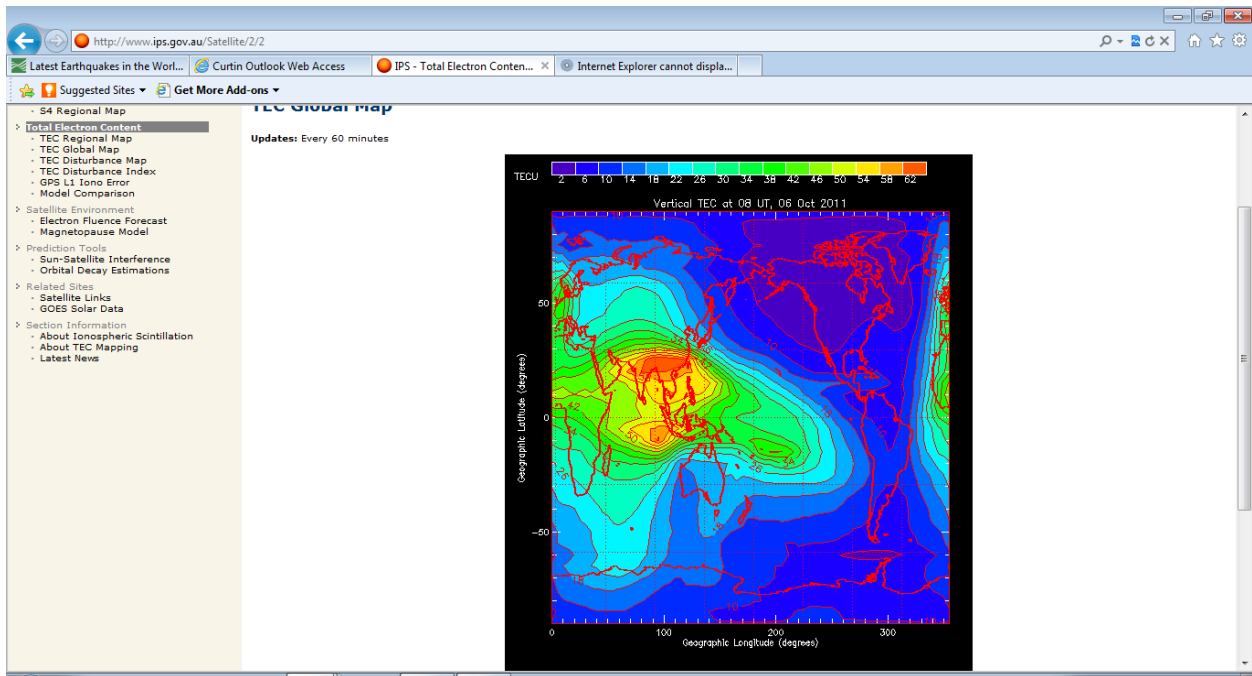
0500ut 06th October 2011

0600UT 06th October, 2011

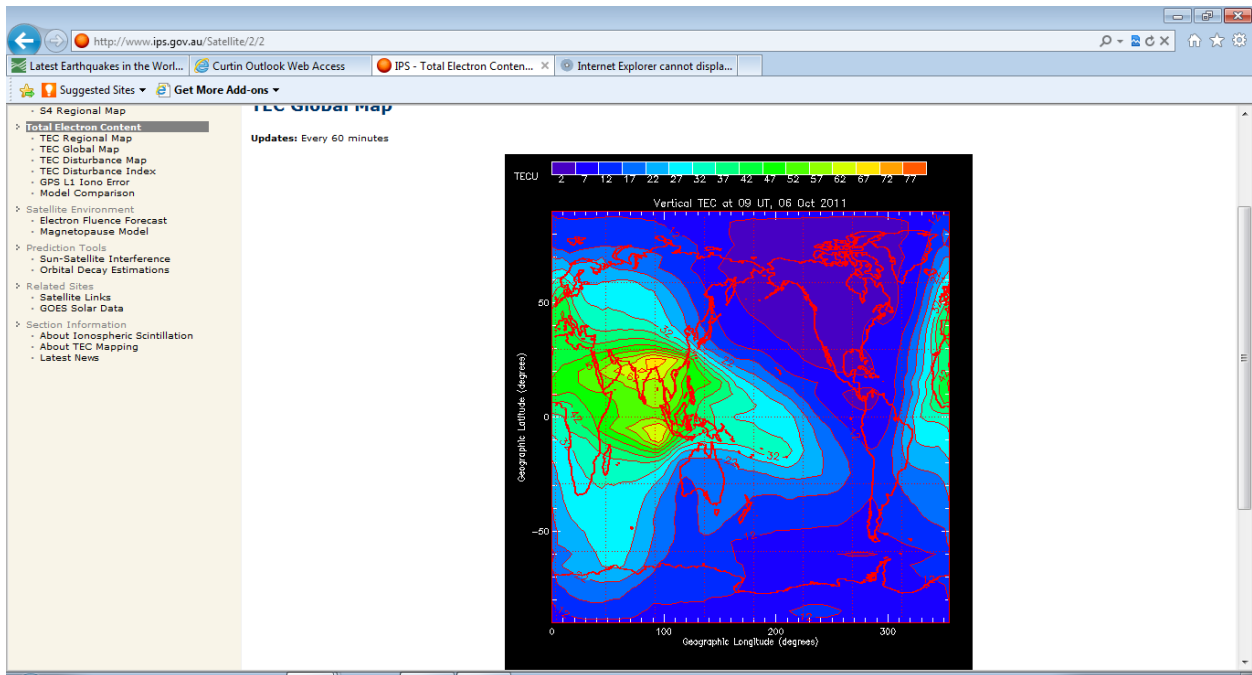


0700UT 06th October 2011





0800UT 06th October, 2011



0900UT 06th October, 2011

